

TEAM RENE
REAL ESTATE

16 SENATOR
AVENUE

HAMILTON, ON



First Floor



Second Floor

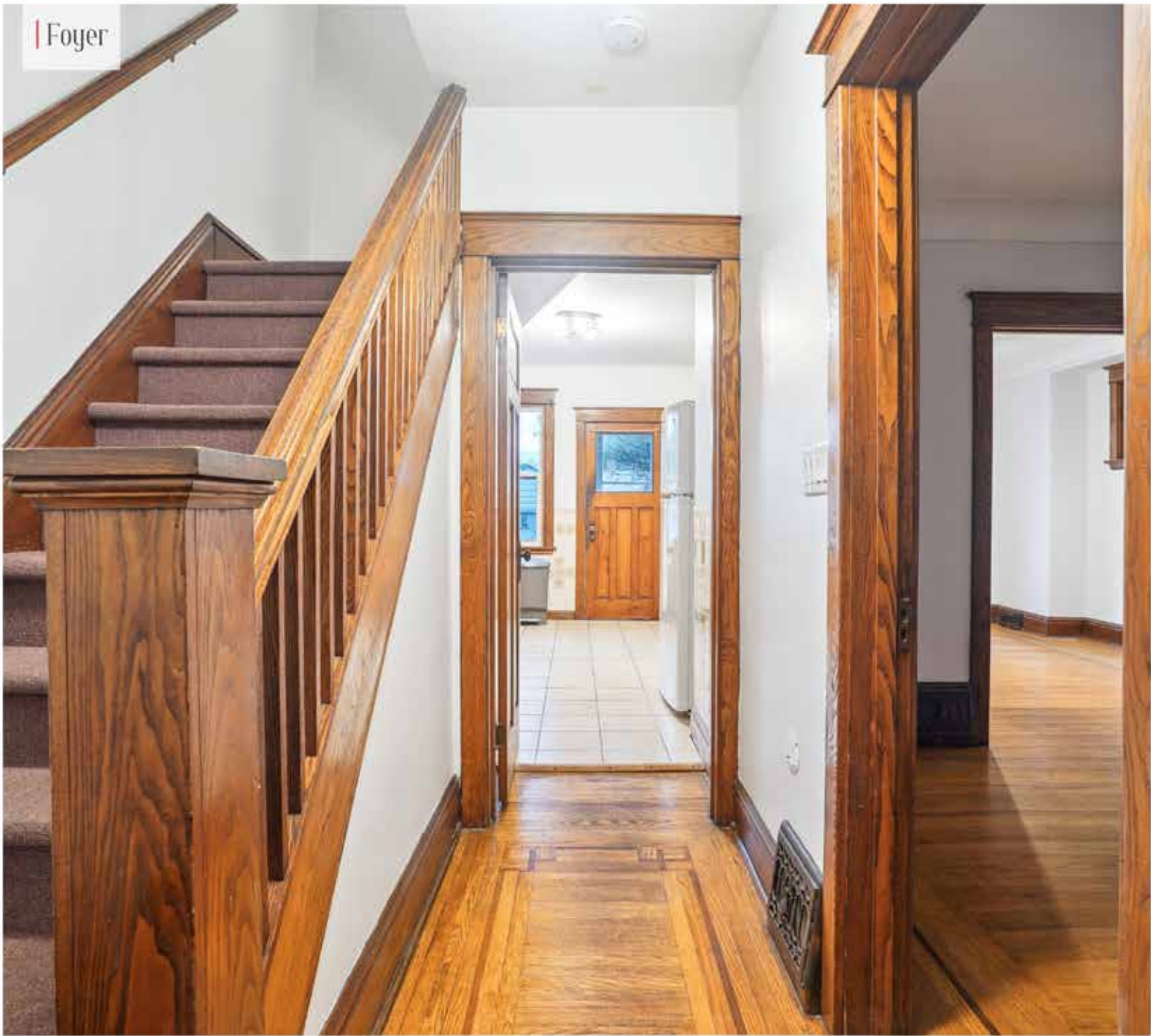


16 Senator Avenue

3 Beds | 1+1 Baths | 1,461 SqFt | 25'x80' Lot

Enjoy this move-in ready 3 bedroom all brick Century home with loads of character & endless opportunities! Located on a quiet street and within walking distance to schools, amenities, parks & transit. This home sits on a 25' x80 lot & offers 1461 sq ft above grade with the opportunity to convert the large attic into an additional living area. The main level features vintage flooring with wood oak trim throughout, a separate family room with a brick fireplace & spacious dining room overlooking the backyard. Additionally, all doors are solid wood and have antique style door handles for added Century Home feel & character. The kitchen offers direct access to the backyard porch for convenient access. The second level offers renovated 4-pc bathroom (2017), a spacious Primary Bedroom with a large bay window for natural light & two bedrooms. The whole house has been recently painted (2024) and the second level includes all of the trim & window sills for that extra clean feel. The attic is an excellent unfinished space that provides the opportunity to create a large primary bedroom, family room or office. The backyard is excellent for relaxing with the family and offers a bonus detached garage. There's plenty of potential for further upgrades, allowing you to tailor the space to your unique vision and lifestyle. Located in a convenient neighbourhood, you'll enjoy easy access to local markets, shops, and downtown attractions.

Foyer



Living Room



Dining Room



Kitchen



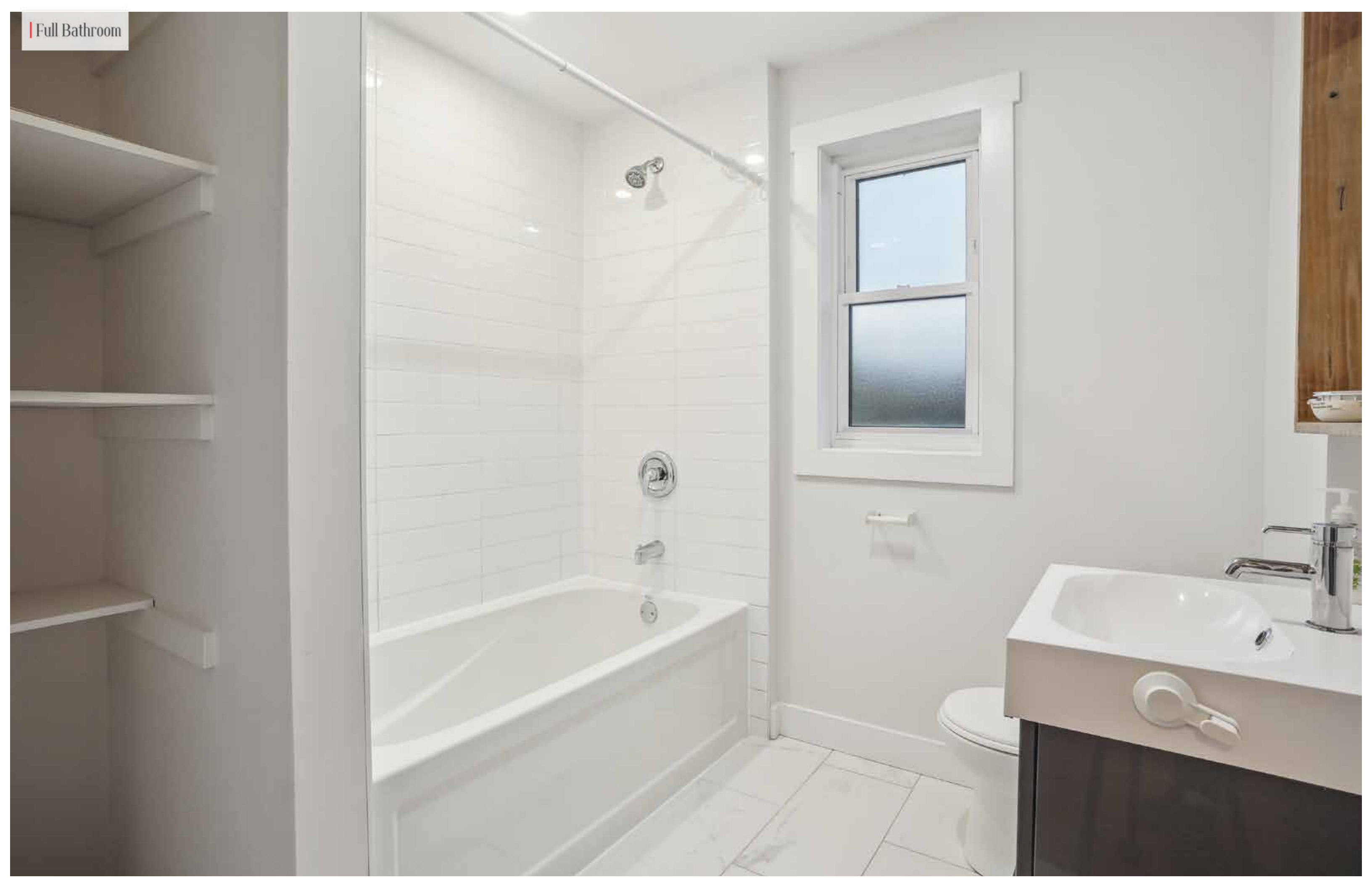
| Primary Bedroom



| Bedroom Two



| Full Bathroom



| Bedroom Three



| Attic



Covered Porch |



Rear Yard



Garage





TR
REAL ESTATE

TEAMRENE.CA | 289.937.1107

4170 FAIRVIEW STREET UNIT #2
BURLINGTON, ON L7L 0G7

REVEL.
REALTY INC. | BROKERAGE